

**CERTIFIED LAND CORNER RECORDATION**

DESCRIPTION OF CORNER EVIDENCE FOUND, AND ORIGINAL RECORD (If known)

$\frac{1}{4}$  corner 5/8, T.14 N., R.66 W., 6th P.M., Laramie County, Wyoming

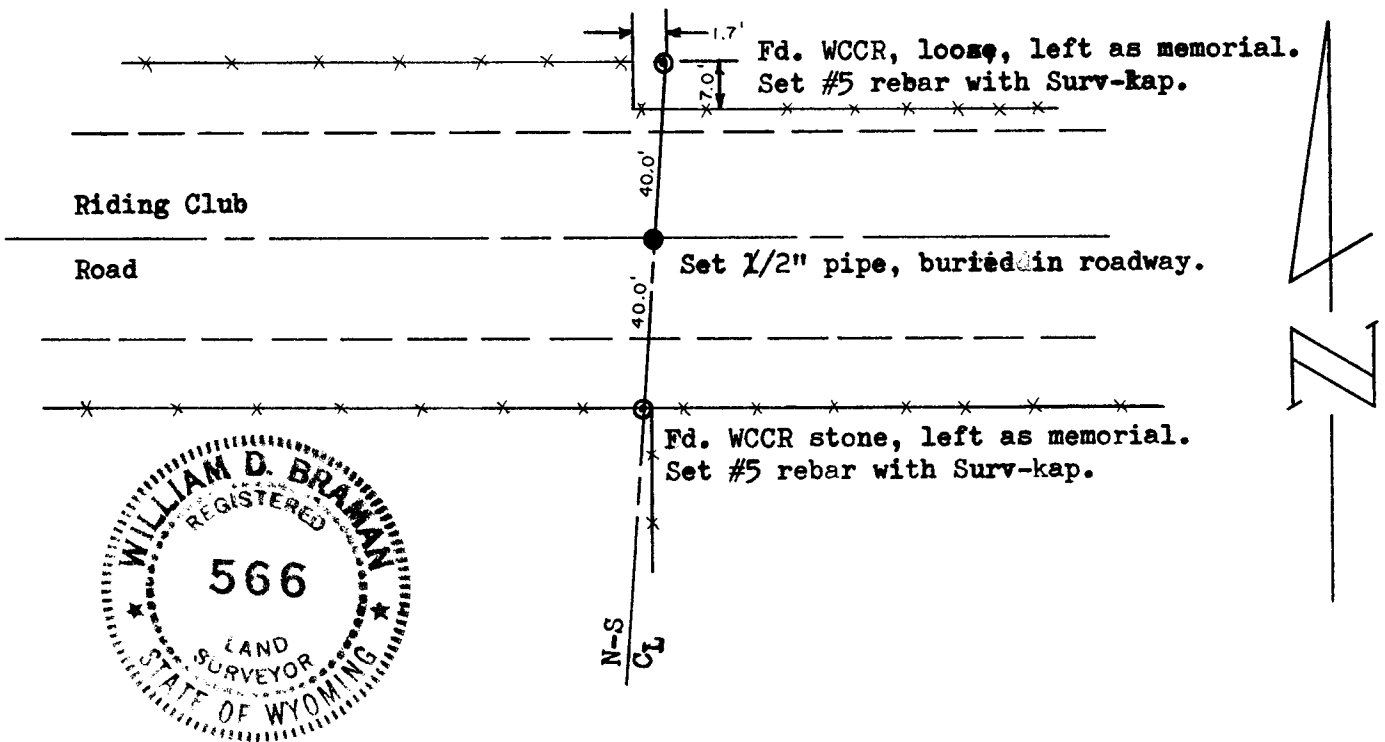
Found WCCR stones, as noted on sketch; set corner from WCCR on south R/W and extension of north-south centerline Section 8, found S $\frac{1}{4}$ , Section 8.

DESCRIPTION OF MONUMENT AND ACCESSORIES ESTABLISHED TO PERPETUATE THE ORIGINAL LOCATION OF THIS CORNER:

Set 1/2" x 18" iron pipe, buried in road.

References: found stones as noted, replaced with 5/8" x 18" rebar with Surv-kap, stones left as memorials.

SKETCH, WITH COURSE AND DISTANCE TO ADJACENT CORNER IF DETERMINED IN THIS SURVEY.  
(May Sketch or Paste Reproduction on Reverse Side.)



I, William D. Braman certify that I have carefully performed or reviewed the work done on the diagrammed corner as reported on this recordation form and approve the same.

William D. Braman  
Signature of Surveyor

LS 566  
Registration No.

STATE OF WYOMING,  
Office of Clerk and Recorder,  
County of Laramie

This "corner record" was filed for record on the 18 day of Feb., 1977, was noted on the cross-index plat and is assigned page No. \_\_\_\_\_, in book No. \_\_\_\_\_.

Janet C Whitehead  
County Official

Cross Index No.	<u>E 7</u>	T.	<u>14</u>	R.	<u>66</u>	Mer.
		T.		R.		Mer.
		T.		R.		Mer.
		T.		R.		Mer.
		T.		R.		Mer.
		T.		R.		Mer.
		T.		R.		Mer.